



# Mackenzie Valley Highway

## Sahtu Community Meetings – February 2020

Government of  
Northwest Territories



# Purpose

To provide an update on Mackenzie Valley Highway (MVH) activities in the Sahtu Region:

- MVH Environmental Assessment (Wrigley to Norman Wells)
- Prohibition Creek Access Road (PCAR)



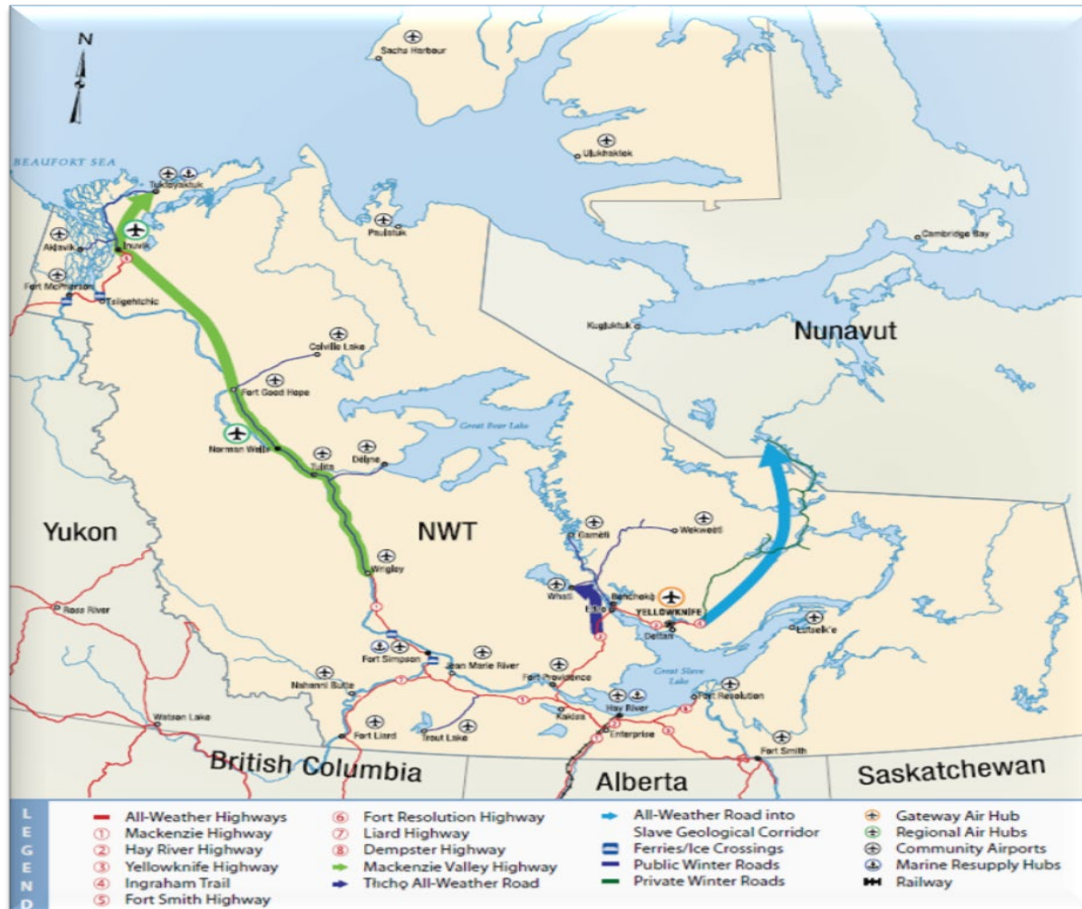
# History

- Mackenzie Valley Highway has been proposed for many years
  - Part of federal Roads to Resources Program in 1960/70's
  - Included in 1990 Transportation Strategy
  - Work undertaken under 1999 Highway Strategy and Investing in Roads
  - 2012 partnered on preparation of Project Description Reports
  - Also considered under current economic opportunities and mineral development strategies
- All strategies involved levels of public and Indigenous engagement





# Strategic Transportation Corridors



- Three strategic transportation corridors identified as priorities in GNWT's 25 Year Transportation Strategy *Connecting Us*
  - **Tłıch'ı All-Season Road**
  - **Mackenzie Valley Highway**
  - **Slave Geological Province Corridor**
- Priorities of the 19<sup>th</sup> Legislative Assembly
  - Make strategic infrastructure investments that connect communities, expand the economy or reduce the cost of living, including the Mackenzie Valley Highway, the Slave Geological Corridor and the Taltson Hydro Project*
- 2019-2023 Mandate of the Government of the Northwest Territories
  - Advance the development of the Mackenzie Valley Highway, Slave Geological Province Corridor, and the Taltson Hydro Expansion Project*



# MVH Specific Benefits

- Connect communities to new social opportunities
- Increased resiliency to impacts of climate change
- Reduce cost of living
- Provide access to mineral and petroleum resources
- Support development of strong northern workforce and business opportunities through construction and operation
- Create tourism opportunities





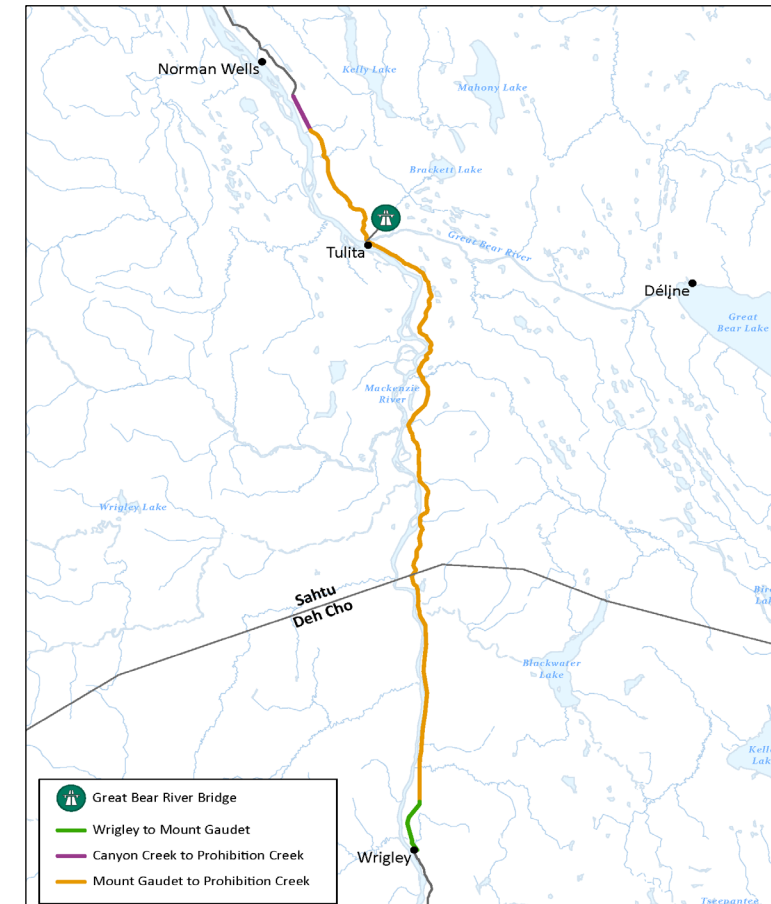
# Mackenzie Valley Highway

- Governments have invested over \$145 million in MVH since 2000 (not including the ITH)
- Inuvik Tuktoyaktuk Highway open November 2017
  - 15,000 travelers in first year
  - Increased tourism
  - Permafrost research
- Canyon Creek Access Road opened November 2018
  - 14 kilometre access road south from Norman Wells along MVH alignment
  - Increased capacity for residents to take advantage of future construction of Mackenzie Valley Highway
- Current focus on segment from Wrigley to Norman Wells



# MVH — Currently Funded Projects

- \$140 million announced June 2018
  - Great Bear River Bridge
  - Mount Gaudet Access Road
  - MVH Environmental Assessment and Engineering (Wrigley to Norman Wells)
- Other funded projects
  - Oscar Creek Bridge
  - Hodgson Creek Bridge (to be included in Mount Gaudet Access Road project)
- Opportunity for additional funding for future highway construction under Investing in Canada Plan





# MVH Environmental Assessment

Year	Milestone
2012	Project Description Report (PDR) prepared in partnership with land claimant groups for sections of MVH from Wrigley to the Dempster Highway
2013	MVH Project referred to MVEIRB to begin the Environmental Assessment process
2015	Project re-scoped to focus on section of proposed highway from Wrigley to Norman Wells
2015	MVEIRB released Terms of Reference to complete the Developer's Assessment Report (DAR)
2018	Federal government and GNWT announced funding to complete the Environmental Assessment

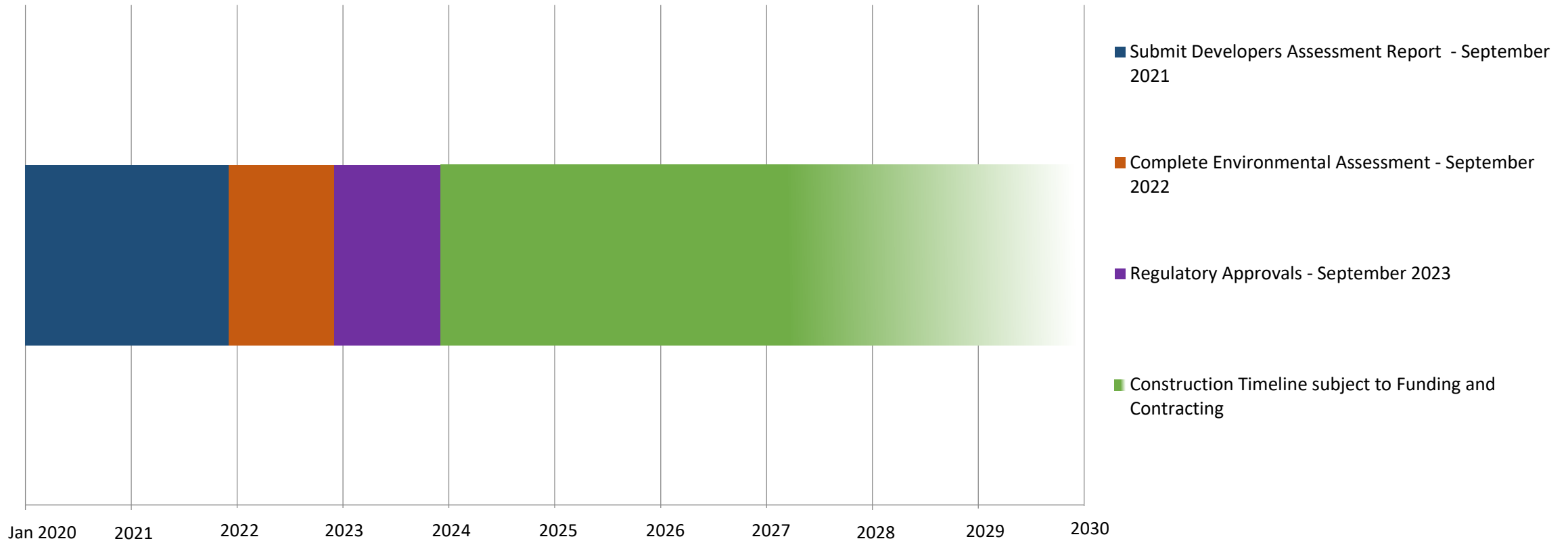


# MVH EA — Next Steps

- **Developer's Assessment Report (DAR)**
  - Completion of the DAR is the next major step in the EA
  - Target date for completing DAR is September 2021
- Technical studies required to complete the DAR
  - Traditional knowledge
  - Socio economic
  - Environmental
  - Archaeological
  - Land use
  - Engineering
- INF plans to complete these studies in partnership with Indigenous and community governments, maximizing local involvement, and determining best possible route.



# MVH EA – Anticipated Timeline



# MVH Construction

Construction of major sections of the MVH between Wrigley and Norman Wells will occur when:

- EA has been completed
  - Land access/tenure has been secured in accordance with *Sahtu Dene and Metis Land Claim Agreement*
  - All regulatory authorizations have been obtained
  - Funding for construction has been secured
- 
- Possible exceptions – short road extensions from communities along MVH alignment (e.g. Prohibition Creek Access Road)



# Memorandum of Understanding

- On April 10, 2019, the GNWT and Sahtu Secretariat Incorporated (SSI) signed a MOU
- Cooperation on the Advancement of the MVH through the Environmental Review and Regulatory Processes





# Road Extension Projects



[www.inf.gov.nt.ca/en/canyon-creek-all-season-access-road-project](http://www.inf.gov.nt.ca/en/canyon-creek-all-season-access-road-project)

- Short road extensions along MVH alignment
- Could advance separately from MVH EA
  - INF will submit separate applications for approval of regulatory boards
  - Will require community support
- Capacity building projects – e.g. Canyon Creek Access Road
  - 14 km road south of Norman Wells
  - \$20 million project
  - 81 people employed at peak construction
  - Average 84% local and northern employment
  - 12 trainees and 16 Heavy Equipment Operators

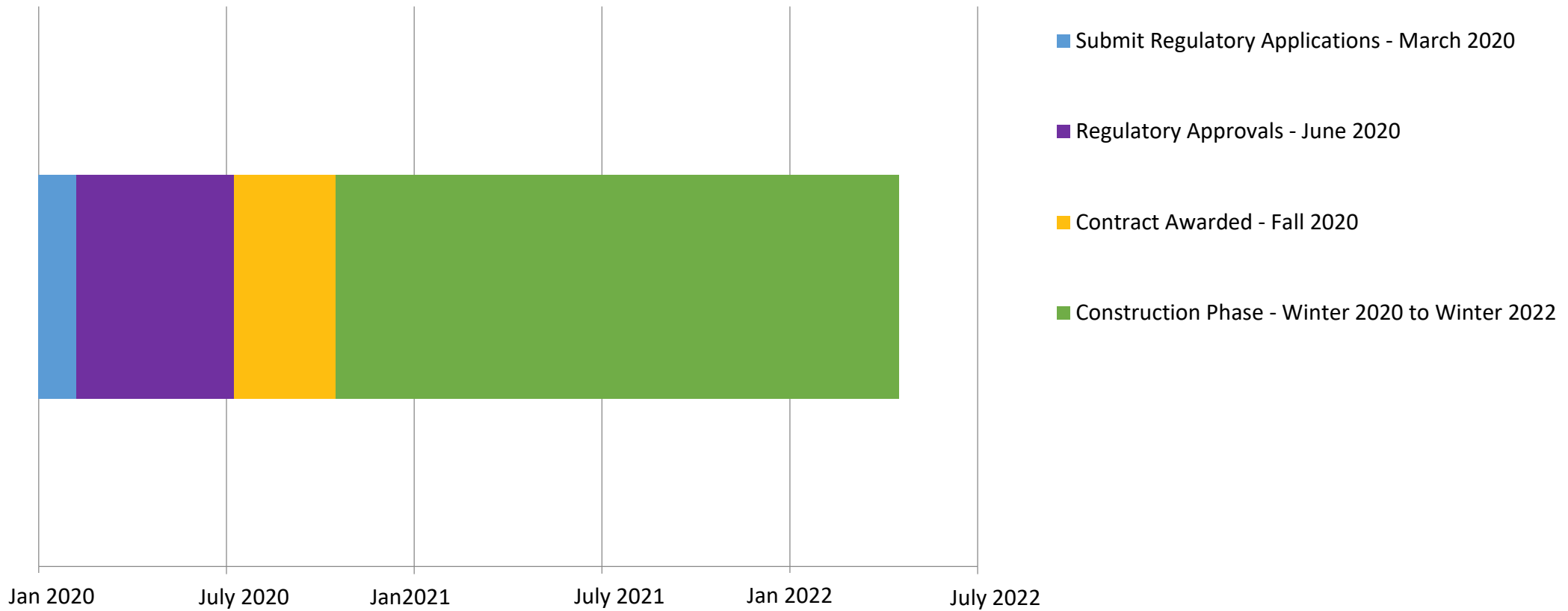
# Prohibition Creek Access Road (PCAR)

- Proposed 14 km all-season road from Canyon Creek to Prohibition Creek
- Construction funding to be secured
- Will be built along alignment of existing Mackenzie Valley Winter Road
- Anticipate between 18 and 24 months to complete construction
- GNWT will work with and engage residents and Indigenous organizations in Sahtu to advance the project





# PCAR – Anticipated Timeline



# Four Mile Creek Road

- Considering in relation to Great Bear River Bridge project
- Training/capacity building opportunities
- Develop winter access road from Mackenzie Valley Winter Road to Great Bear River Bridge as part of GBRB project
- Design for winter access road being completed as part of GBRB design
- Upgrade winter access road to all-weather road after completion of GBRB project
- Construction funding for all-weather road to be secured



# MVH Participation

- GNWT has developed a formal working relationship through MOU with SSI
- Section 35 consultation
- Public/community engagement
- Opportunities for public debate through Environmental Assessment and permitting processes
- [MVH@gov.nt.ca](mailto:MVH@gov.nt.ca)





*Thank you.*

*MVH@gov.nt.ca*

*[www.inf.gov.nt.ca/en/mackenzie-valley-highway-project](http://www.inf.gov.nt.ca/en/mackenzie-valley-highway-project)*